



Notice of Race
The Manhattan Regatta
A one-design event for J105's
May 14-15, 2011
Organizing Authority (OA)
Manhattan Sailing Club
The North Cove
Battery Park City, New York, NY

1 RULES

- 1.1 The regatta will be governed by the rules as defined in:
The Racing Rules of Sailing (RRS), including the US SAILING prescriptions
The J105 Class Association Rules, except the prescriptions to rules 60, 63.2, and 63.4
shall not apply. This changes RRS rule 63.7.
- 1.2 USCG Approved personal flotation devices (PFD) shall be worn at all times. This
changes RRS rule 1.2.

2 ELIGIBILITY AND ENTRY

- 2.1 The regatta is open to all boats of only the J/105 class.
- 2.2 Eligible boats may enter by completing the online registration form at
www.yachtscoring.com, by 11 May, 2011.
- 2.3 Late entries will be accepted until 1000 14 May 2011

3 CLASSIFICATION AND ADVERTISING

- 3.1 This is a Level A event under Rule 3.6 of the Class Rules.
- 3.2 A boat and her crew shall comply with ISAF Regulation 20, Advertising Code.

4 Fees

- 4.1 Entry fee of \$125 is required

The Manhattan Regatta

5 SCHEDULE OF EVENTS

- 5.1 Dates of Racing: 14 & 15 May 2011
- 5.2 Skippers meeting at The North Cove Saturday 1000 on 14 May
- 5.3 Number of races: More than one race may be held on any day at the sole discretion of the Race Committee. No warning signal will be given after 1600 on 14 May and 1400 on Sunday, 15 May.
- 5.4 Saturday, May 14
 - 1000 Skippers meeting aboard the Mermaid (MSC Clubhouse at The North Cove)
 - 1155 Warning signal for the first race
 - 1800 Social gathering aboard the Honorable William Wall (launch service will be provided)
- 5.5 Sunday, May 15
 - 1025 Warning signal for the first race
 - 1600 Awards presentation at The North Cove

6 SAILING INSTRUCTIONS

- 6.1 The sailing instructions will be available after 1700 on 13 May 2011 aboard the Mermaid (Manhattan Sailing Club, Dennis Connors North Cove) and on www.yachtscoring.com

7 VENUE

- 7.1 See Attachment 1 for location of the racing areas. The starting area will be near the Honorable William Wall (north of Ellis Island) or an alternate site to be determined each day based on the weather conditions.

8 COURSES

- 8.1 The courses may be around Government marks, windward-leeward, and/or a distance race around Governors Island.
- 8.2 Course descriptions will be provided in the sailing instructions
- 8.3 The approximate position of the starting area will be announced approximately 45min before each warning signal on VHF channel 69.

9 PENALTY SYSTEM

- 9.1 Decisions of the protest committee will be final as provided in rule 70.5

The Manhattan Regatta

10 SCORING

- 10.1 Completion of one-race shall constitute a series.
- 10.2 Low point scoring system of Appendix "A" of RRS will apply as modified. All races scored will be counted; there will be no throw-outs.

11 BERTHING

- 11.1 Boats may be berthed at The North Cove <http://www.thenorthcove.com/> or Liberty Landing Marina <http://www.libertylandingmarina.com/> Reservations are essential

12 HAUL-OUT RESTRICTIONS

- 12.1 Boats shall not be hauled out during the regatta except with the prior permission of the Race Committee.

13 NAVIGATION RULES

- 13.1 All boats are cautioned to observe the Navigation Rules of the Road and to yield right of way to vessels restricted in their ability to maneuver, especially to tugs, ferries and barges. Any boat observed to impede such traffic may be protested by the Race Committee.

14 RADIO COMMUNICATIONS

- 14.1 Except in an emergency, or to report a protest or withdrawal, a boat shall neither make radio transmissions while racing nor receive radio communications not available to all boats. This restriction also applies to mobile telephones.
- 14.2 All yachts shall carry an operable VHF Radio capable of transmitting and receiving on channels 9, 13, 16, 69. VHF channel 69 will be used for communications with the RC.

15 PRIZES

- 15.1 Overall prizes will be given at the end of the regatta to the top three boats

16 DISCLAIMER OF LIABILITY AND INSURANCE

- 16.1 Competitors participate in the regatta entirely at their own risk. See RRS Rule 4, Decision to Race. The organizing authority will not accept any liability for material damage or personal injury or death sustained in conjunction with or prior to, during, or after the regatta. As a condition of the participation of any

The Manhattan Regatta

boat in any race or related activity sponsored or undertaken by Manhattan Sailing Club, the owner and each crewmember agree that the safety of the boat and her crew and the decision whether or not to start or continue to race is solely their responsibility. All competitors waive all claims, which he or she, or any heir, representative, successor or assignee, may have against Manhattan Sailing Club and its officers, trustees, members, committees, employees or agents, arising out of or in any way connected with participation in such race or activity.

17 CONTACT INFORMATION

17.1 For further information contact:

David Spence (Fleet 10): David@windigodesign.com

Or

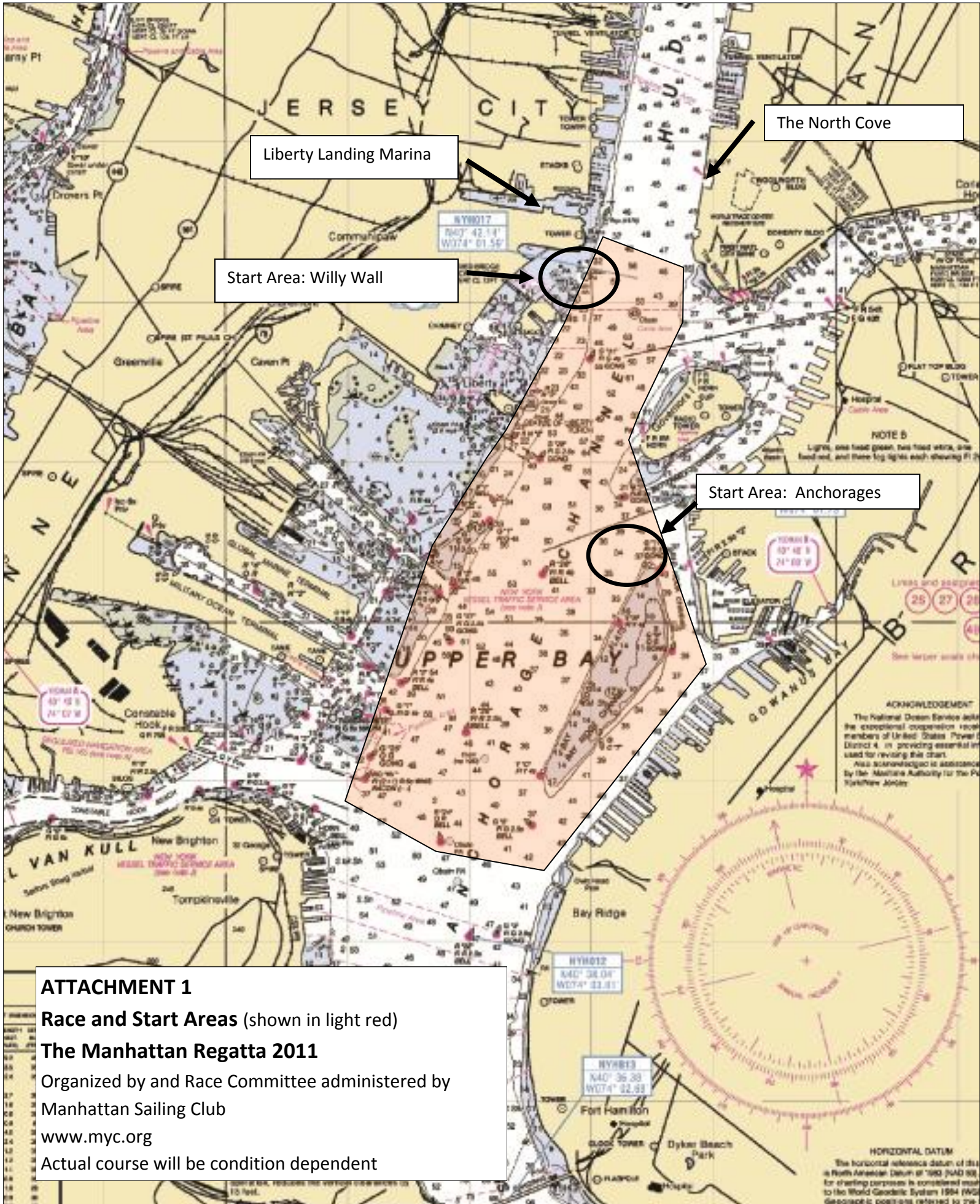
Manhattan Sailing Club

Telephone: (212) 786-3323

Website: <http://www.myc.org/>



The Manhattan Regatta



ATTACHMENT 1

Race and Start Areas (shown in light red)

The Manhattan Regatta 2011

Organized by and Race Committee administered by

Manhattan Sailing Club

www.myc.org

Actual course will be condition dependent

ACKNOWLEDGEMENT
The National Ocean Service joins the exceptional cooperation race members of United States Power District 4, in providing essential assistance for revising this chart.
Also acknowledged is assistance by the Maritime Authority for the Port of New York & New Jersey.

HORIZONTAL DATUM

The horizontal reference datum of this chart is North American Datum of 1983 (NAD 83), for charting purposes is considered most to the World Geodetic System 1984 (WGS 84) geographic positions referred to the